



US 20130048974A1

(19) **United States**

(12) **Patent Application Publication**  
**Sakuma et al.**

(10) **Pub. No.: US 2013/0048974 A1**

(43) **Pub. Date: Feb. 28, 2013**

(54) **ORGANIC LUMINESCENT MATERIALS,  
COATING SOLUTION USING SAME FOR  
ORGANIC EMITTING LAYER, ORGANIC  
LIGHT EMITTING DEVICE USING COATING  
SOLUTION AND LIGHT SOURCE DEVICE  
USING ORGANIC LIGHT EMITTING  
DEVICE**

(71) Applicants: **Hiroataka Sakuma**, Hitachinaka (JP);  
**Sukekazu Aratani**, Hitachiota (JP);  
**Hiroshi Sasaki**, Mito (JP)

(72) Inventors: **Hiroataka Sakuma**, Hitachinaka (JP);  
**Sukekazu Aratani**, Hitachiota (JP);  
**Hiroshi Sasaki**, Mito (JP)

(21) Appl. No.: **13/659,947**

(22) Filed: **Oct. 25, 2012**

**Related U.S. Application Data**

(63) Continuation of application No. 12/858,470, filed on  
Aug. 18, 2010, now Pat. No. 8,319,211.

(30) **Foreign Application Priority Data**

Jan. 20, 2010 (JP) ..... 2010-009610

Jan. 20, 2010 (JP) ..... 2010-009611

**Publication Classification**

(51) **Int. Cl.**  
**C09K 11/06** (2006.01)  
**H01L 51/56** (2006.01)  
**H01L 51/52** (2006.01)

(52) **U.S. Cl.** . **257/40**; 438/46; 252/301.16; 257/E51.022

(57) **ABSTRACT**

It is an object of the present invention to provide an organic light-emitting device which can emit white light by easily controlling dopant concentrations. The organic light-emitting device has a first electrode (112) and second electrode (111) which hold a light-emitting layer (113) in-between, wherein the light-emitting layer contains a host material (104), red-light-emitting dopant (105), green-light-emitting dopant (106) and blue-light-emitting dopant (107), the red-light-emitting dopant containing a first functional group for transferring the dopant toward the first electrode and the green-light-emitting dopant containing a second functional group for transferring the dopant toward the second electrode.

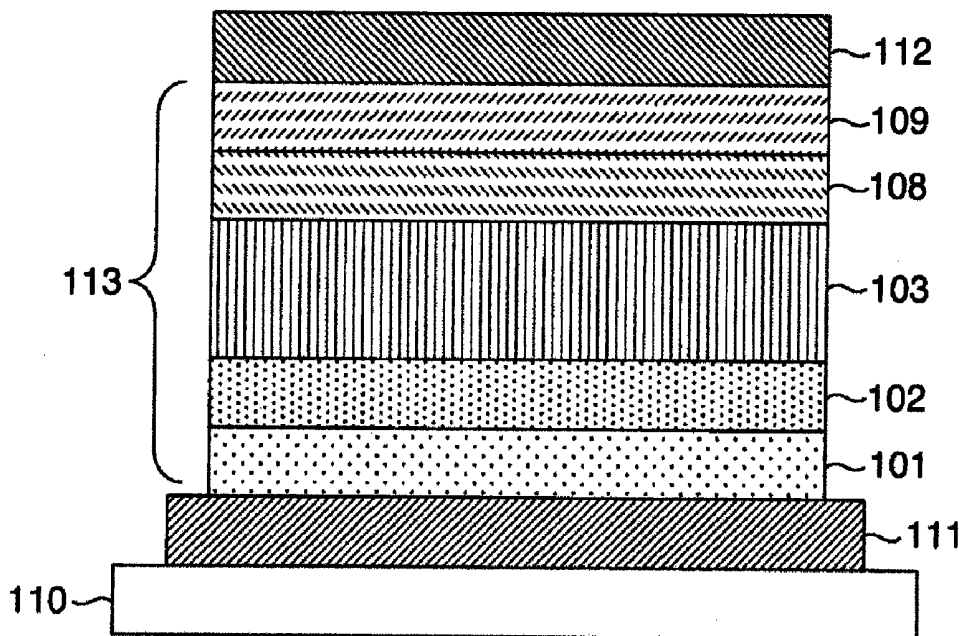


FIG. 1

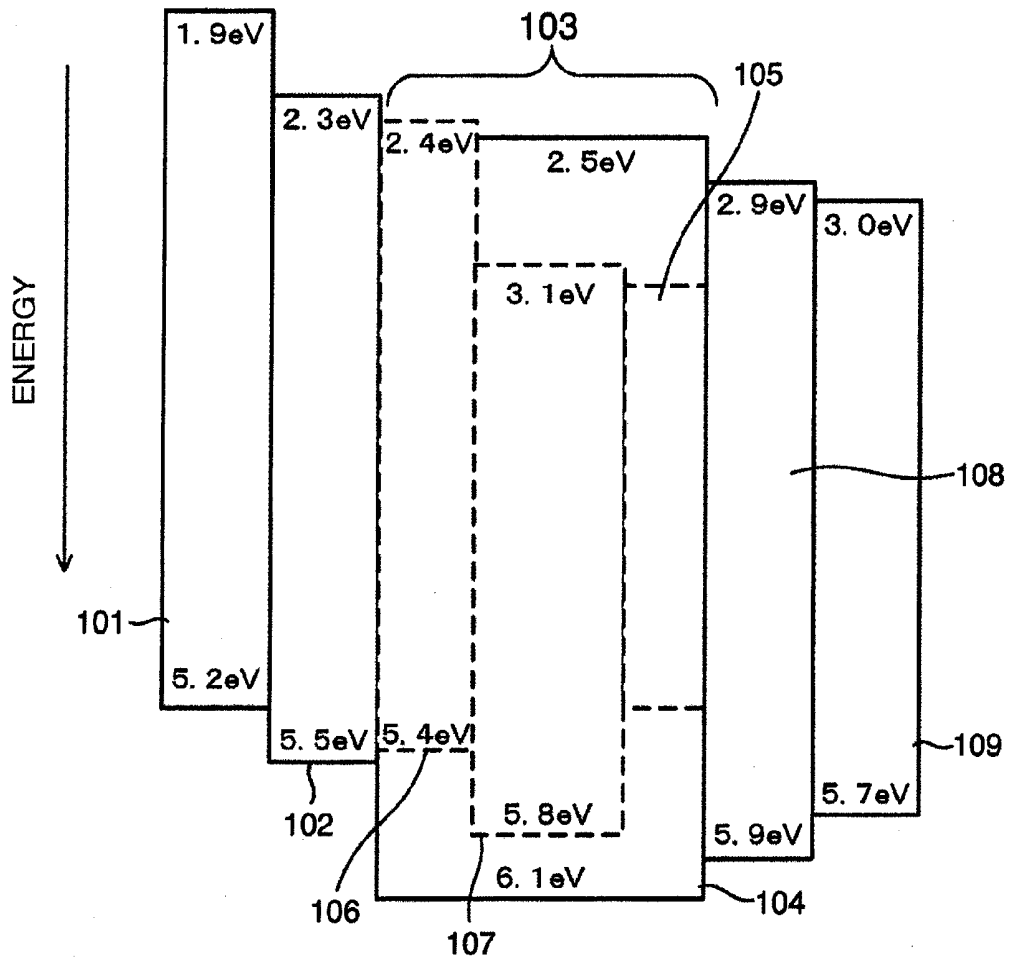


FIG. 2

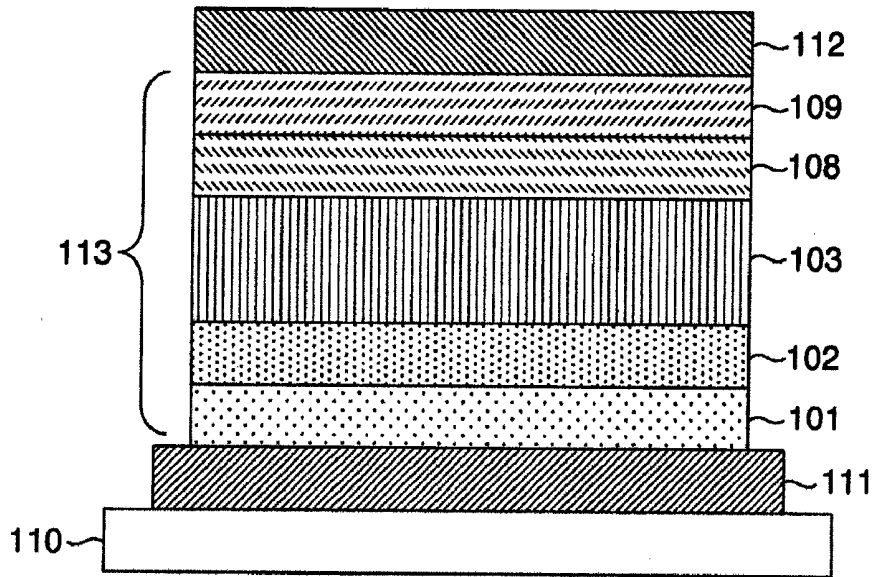


FIG. 3

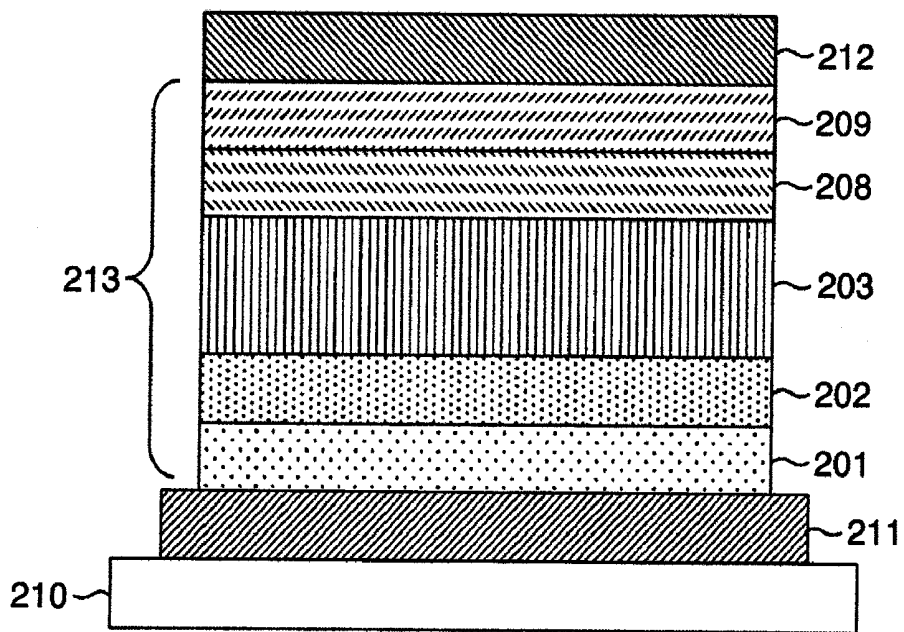
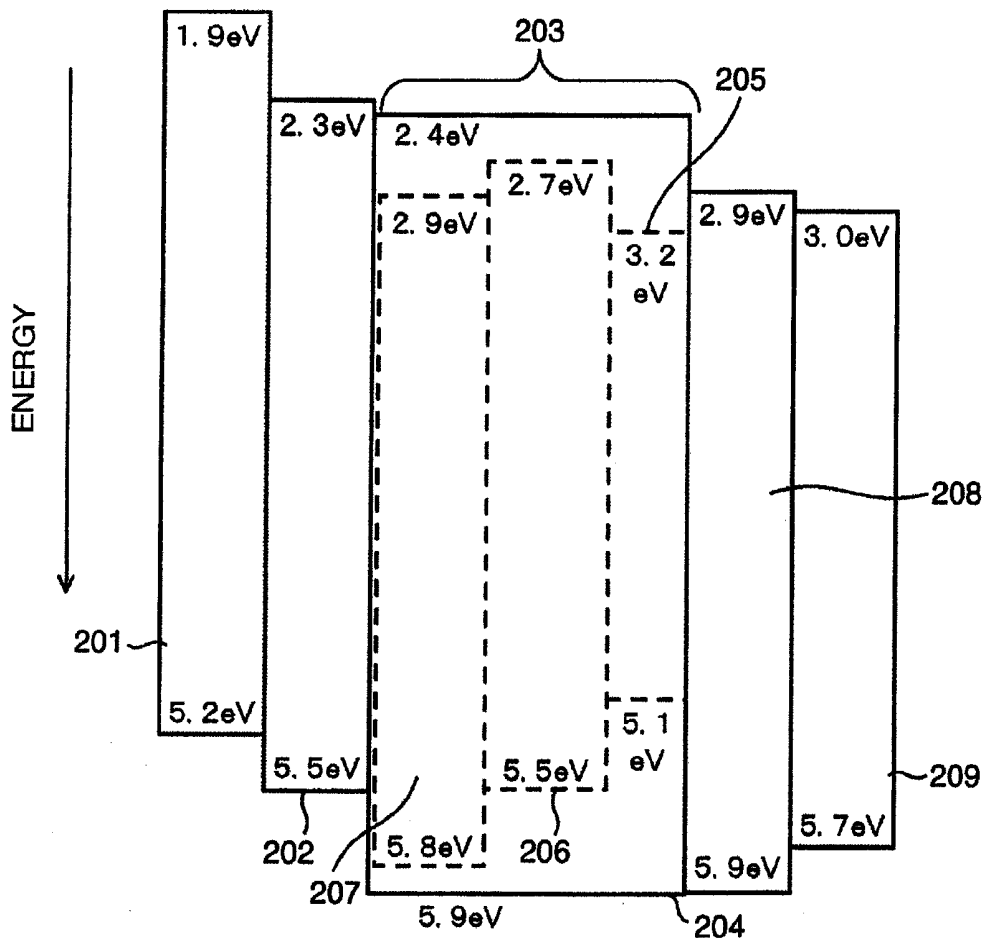


FIG. 4



**ORGANIC LUMINESCENT MATERIALS,  
COATING SOLUTION USING SAME FOR  
ORGANIC EMITTING LAYER, ORGANIC  
LIGHT EMITTING DEVICE USING COATING  
SOLUTION AND LIGHT SOURCE DEVICE  
USING ORGANIC LIGHT EMITTING  
DEVICE**

**CROSS-REFERENCE TO RELATED  
APPLICATION**

**[0001]** This application is a continuation application of U.S. application Ser. No. 12/858,470, filed Aug. 18, 2010, the contents of which are incorporated herein by reference.

**FIELD OF THE INVENTION**

**[0002]** The present invention relates to an organic luminescent material, coating solution using the organic luminescent material for organic light-emitting layers, organic light-emitting device using the coating solution and light source device using the organic light-emitting device.

**BACKGROUND OF THE INVENTION**

**[0003]** The methods for producing organic light-emitting devices (LEDs) broadly fall into two categories, vacuum vapor deposition and coating. The coating method has advantages of easily producing large-area films and high material utilization factor. In order to apply the coating method, development of devices with a single light-emitting layer is demanded, because it is necessary to reduce number of organic LED layers.

**[0004]** For organic white-light-emitting devices with a single light-emitting layer, Patent Document 1 discloses an organic EL device with a single light-emitting layer of a composition of at least (a) polymer and (b) compound for forming a light-emitting center, placed between electrodes. The composition contains an electron transfer material and hole transfer material in a well-balanced manner. The polymer itself emits blue or shorter wavelength colors, and is dispersed with at least two species of compounds for forming a light-emitting center, each individually emitting a color, where a combination of these compounds is selected in such a way that the organic EL device as a whole emits white color.

**[0005]** Recently, organic light-emitting devices have been attracting attention as planar light sources of the next generation. An organic light-emitting device exhibits excellent characteristics of spontaneously emitted light, wide view angle, high responsiveness and high color rendition. One example of organic light-emitting device comprises a glass substrate which supports a transparent electrode (e.g., of ITO), organic layer composed of hole transport layer, light-emitting layer, electron transport layer and so on, and repeller of low work function, where light is emitted from the back side of the substrate after passing through the electrode.

**[0006]** The methods for producing organic light-emitting devices include vacuum vapor deposition, ink jetting and printing. Vacuum vapor deposition heats and evaporates an organic material under a vacuum and deposits the vapor on a substrate to form the film thereon. It can simply produce an organic light-emitting device of desired structure because of its capability of controlling film thickness and concentration by manipulating deposition rate. However, it involves disadvantages of low material utilization factor and difficulty in increasing substrate size. Ink jetting or printing is expected to

be a low-cost wet method, because of its advantages of high material utilization factor and easily forming large-area device, although involving a disadvantage of difficulty in forming laminated structures because solubility of an underlying material must be controlled for forming a laminated structure.

**[0007]** An organic light-emitting device must emit white color when used as a light source. It is necessary for the device to emit three colors of red, blue and green in order to realize white color of high rendition.

**[0008]** The wet methods proposed so far for producing organic white-light-emitting devices include mixing three species of dopants each emitting red, blue or green color in a light-emitting layer. For example, Patent Document 1 discloses a method which uses polyvinyl carbazole as a host material for light-emitting layer which is dispersed with red-, blue- and green-light-emitting dopants at a low concentration (0.01 to 5% by mol) to realize white color.

**[0009]** [Patent Document 1] JP-A-9-63770

**BRIEF SUMMARY OF THE INVENTION**

**[0010]** The conventional method for producing an organic light-emitting device involves a disadvantage of difficulty in emitting white color by easily controlling red-, green- and blue-light-emitting dopant concentrations without causing their phase separation.

**[0011]** The objects of the present invention are to provide an organic luminescent material capable of being controlled for dopant concentrations, coating solution using the organic luminescent material for organic light-emitting layers, organic light-emitting device using the coating solution and light source device using the organic light-emitting device.

**[0012]** The conventional coating method for producing an organic light-emitting device involves a disadvantage of difficulty in controlling dopant concentrations because of their very low concentrations, about 0.02% by mol with a green-light-emitting dopant, 0.02% and 0.015% by mol with a red-light-emitting dopant.

**[0013]** The other objects of the present invention are to provide an organic luminescent material easily emitting white light, coating solution using the organic luminescent material for organic light-emitting layers, organic light-emitting device using the coating solution and light source device using the organic light-emitting device.

**[0014]** One of the features of the present invention for solving the above problems is an organic light-emitting device with first and second electrodes which hold a light-emitting layer in-between, wherein the light-emitting layer contains a host material, red-light-emitting dopant and blue-light-emitting dopant, the red-light-emitting dopant containing a first functional group for transferring the dopant toward the first electrode.

**[0015]** Another feature of the present invention is a coating solution for producing the light-emitting device for the organic light-emitting device, the solution containing a solvent, host material, red-light-emitting dopant and blue-light-emitting dopant.

**[0016]** Still another feature of the present invention is an organic luminescent material for producing the light-emitting device for the organic light-emitting device, the material containing a host material, red-light-emitting dopant, blue-light-emitting dopant and green-light-emitting dopant.

**[0017]** Still another feature of the present invention is an organic light-emitting device with first and second electrodes

which hold a light-emitting layer in-between, wherein the light-emitting layer contains a host material, red-light-emitting dopant and green-light-emitting dopant, the red-light-emitting dopant being present in the light-emitting layer at graded concentrations.

[0018] Still another feature of the present invention is a coating solution for producing the light-emitting device for the organic light-emitting device, the solution containing a solvent, host material, red-light-emitting dopant and green-light-emitting dopant.

[0019] Still another feature of the present invention is an organic luminescent material for producing the light-emitting device for the organic light-emitting device, the material containing a host material, red-light-emitting dopant, blue-light-emitting dopant and green-light-emitting dopant.

[0020] Still another feature of the present invention is a light source device using the organic light-emitting device including the organic light-emitting device.

[0021] Other objects, features and advantages of the invention will become apparent from the following description of the embodiments of the invention taken in conjunction with the accompanying drawings.

#### ADVANTAGES OF THE INVENTION

[0022] The present invention provides an organic luminescent material capable of emitting white light, produced by easily controlling dopant concentrations, coating solution using the organic luminescent material for organic light-emitting layers, organic light-emitting device using the coating solution and light source device using the organic light-emitting device. The other challenges, structures and advantages will be clarified by the description of the preferred embodiments described below.

[0023] The present invention also provides an organic luminescent material capable of easily emitting white light, coating solution using the organic luminescent material for organic light-emitting layers, organic light-emitting device using the coating solution and light source device using the organic light-emitting device.

#### BRIEF DESCRIPTION OF THE DRAWINGS

[0024] FIG. 1 is an energy diagram of each component in the white-light-emitting device.

[0025] FIG. 2 is a cross-sectional view of one embodiment of the organic light-emitting device of the present invention.

[0026] FIG. 3 is a cross-sectional view of one embodiment of the white-light-emitting device of the present invention.

[0027] FIG. 4 is an energy diagram of the white-light-emitting device prepared in Example 1.

#### DETAILED DESCRIPTION OF THE INVENTION

[0028] The present invention is described in detail by referring to the attached drawings and the like.

[0029] The conventional coating method for producing an organic light-emitting device involves a disadvantage of difficulty in controlling dopant concentrations because of their very low concentrations, about 0.02% by mol with a green-light-emitting dopant, 0.02% and 0.015% by mol with a red-

light-emitting dopant. Moreover, the device cannot exhibit a sufficient light-emitting efficiency, because of insufficient energy transfer between the dopants and insufficient containment of the carrier in the light-emitting region.

[0030] Moreover, the conventional coating method for producing an organic light-emitting device involves disadvantages of insufficient light-emitting efficiency and difficulty in controlling dopant concentrations, resulting from transfer of energy between the dopants. Excitation energy of blue-light-emitting dopant decreases in the descending order of blue-light-emitting, green-light-emitting and red-light-emitting dopants, by which is meant that energy transfer tends to occur from a blue-light-emitting dopant to a green-light-emitting dopant and from a green-light-emitting dopant to a red-light-emitting dopant. In a light-emitting structure with the three species of dopants, they are present close to each other, tending to cause energy transfer between the different species of dopants. A blue-light-emitting dopant will be transferred eventually to a red-light-emitting dopant of the lowest excitation energy when energy transfer can occur, depleting the blue-light-emitting dopant with the result that the device cannot efficiently emit white light. For the device to sufficiently emit blue light, it is necessary to greatly decrease green-light-emitting and red-light-emitting dopant concentrations.

[0031] The organic light-emitting layer as one embodiment of the present invention contains a host material and a dopant having a substituent which works to localize the dopant during the film-making step. The dopant is localized in the vicinity of the light-emitting layer surface or interface with the underlying layer. Being localized in the vicinity of the electrode means that the dopant is present in the layer at a higher concentration in the vicinity of the electrode. As a result, the light-emitting layer prepared by the wet method has a function substantially equivalent to that of a three-layered light-emitting layer. In such a structure, distance between the dissimilar dopants increases except in the vicinity of the interface, decelerating energy transfer between the dissimilar dopants, which facilitates control of dopant concentrations and formation of a white-light-emitting device.

[0032] FIG. 2 is a cross-sectional view of one embodiment of the organic white-light-emitting device of the present invention. The device has a substrate 110 which supports a lower electrode 111 as the second electrode, organic layer 113 and upper electrode 112 as the first electrode in this order from the substrate. The device is of bottom emission type in which light emitted by a light-emitting layer 103 is taken out from the lower electrode 111 side. The lower electrode 111 is the transparent electrode working as the anode and upper electrode 112 is the repeller working as the cathode. The organic layer 113 may be of a single-layer structure with the light-emitting layer 103 alone or multi-layer structure with one or more other layers selected from the group consisting of electron injection layer 109, electron transport layer 108, hole transport layer 102 and hole injection layer 101. The organic light-emitting layer illustrated in FIG. 1 makes a light source device, when provided with a driving circuit, case and so on.

[0033] The light-emitting layer contains a host molecule and dopant molecule which contains a red-light-emitting,





polymers are also useful. They may be used in combination of low-molecular-weight material. Phthalocyanine-base and starburst-amine-base compounds are also applicable.

**[0044]** Examples of the material for the hole transport layer **102** include, but not limited to, starburst-amine-base compound, stilbene derivative, hydrazone derivative and thiophene derivative. They may be used in combination.

**[0045]** The electron transport layer **108** is responsible for donating electrons to the light-emitting layer **103**. Examples of the material for the electron transport layer **108** include bis(2-methyl-8-quinolinolate)-4-(phenylphenolate) aluminium (Balq), tris(8-quinolinolate)aluminum (Alq<sub>3</sub>), oxadiazole derivative, triazole derivative, flerene derivative, phenanthroline derivative and quinoline derivative.

**[0046]** The electron injection layer **109** works to improve efficiency of injection of the electrons from the cathode to the electron transport layer **108**. Examples of the preferable material for the electron injection layer **109** include, but not limited to, lithium fluoride, magnesium fluoride, calcium fluoride, strontium fluoride, barium fluoride, magnesium oxide and aluminum oxide. They may be used in combination.

**[0047]** The material for the anode as the lower electrode **111** is not limited so long as it is transparent and having a high work function. The examples include an electroconductive oxide, e.g., ITO or IZO, or metal of high work function, e.g., thin Ag. The electrode can be patterned normally on a substrate, e.g., glass, by photolithography.

**[0048]** The cathode as the upper electrode **112** works to reflect light emitted from the light-emitting layer **103**. Examples of the material for the upper electrode **112** include, but not limited to, LiF/Al laminate and Mg/Ag alloy. LiF may be replaced by a Cs, Ba or Ca compound.

**[0049]** The coating solution of the present invention is composed of a host material, and red-light-emitting, green-light-emitting and blue-light-emitting dopants dissolved in an adequate solvent. The coating solution may not necessarily need a green-light-emitting dopant. The solvents useful for the present invention are not limited so long as they can dissolve these components. The examples include aromatic hydrocarbons (e.g., toluene), ethers (e.g., tetrahydrofuran), alcohols, fluorine-base ones. These solvents may be used in combination for adjusting solubility and drying speed of each component. For example, a mixture of solvents of different boiling point may be used, wherein the higher-boiling one is used as a poor solvent with the red-light-emitting dopant to accelerate transfer of the dopant to the film surface. Solubility of the solvent is determined by liquid chromatography.

**[0050]** The coating methods for forming the light-emitting layer include spin coating, casting, dip coating, spray coating, screen printing and ink-jet printing, one of which is selected to form the light-emitting layer.

**[0051]** The device structure is described taking a bottom emission type structure as an example. However, the present invention is also applicable to a top emission type structure with the upper electrode working as a transparent electrode so long as the upper and lower electrodes work as the respective cathode and anode.

**[0052]** The present invention is described in more detail by specific examples. It should be understood that these examples are intended to illustrate some aspects of the present invention and not to limit the invention. Those skilled in the

art can make various variations and modifications without departing from the scope of the technical concept of the invention described herein.

## EXAMPLES

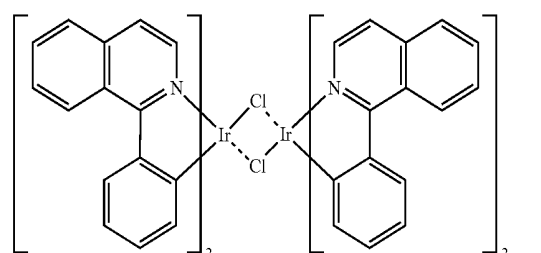
### Example 1

#### Synthesis of Exemplary Compound 1

**[0053]** First, the red-light-emitting dopant represented by the structural formula (1) was synthesized as one of the major constituents of the present invention to produce the white-light-emitting device of the present invention.

**[0054]** The compound represented by Formula 6 was synthesized as the essential intermediate for synthesizing the compounds represented by Formulae 2 and 3 by the following procedure.

[Formula 6]



**[0055]** A 200 mL three-necked flask was charged with 0.718 g of phenylisoquinoline dissolved in 30 mL of ethoxyethanol and 0.418 g of iridium chloride dissolved in 10 mL of water, which were mixed with each other in the flask. The mixture was heated at 120° C. for 10 hours under reflux in a nitrogen atmosphere, then cooled to room temperature, and treated by evaporation. The resulting solid was washed with alcohol to produce the compound represented by Formula 6.

(Synthesis of Compound Represented by Formula 2)

**[0056]** The compound represented by Formula 2 was synthesized by the following procedure.

**[0057]** A 200 mL three-necked flask was charged with 0.959 g of the intermediate A, 0.512 g of 2,2-dimethyl-6,6,7,7,8,8,8-heptafluoro-3,5-octanedione, 0.25 g of sodium carbonate and 30 mL of ethoxyethanol. The mixture was heated at 115° C. for 10 hours under reflux in a nitrogen atmosphere, then cooled to room temperature, and treated by evaporation. The resulting solid was washed with water and hexane, and treated by silica-gel column chromatography with a mixed solvent of ethyl acetate and hexane as the mobile phase to produce the compound represented by Formula 2. It had a molecular weight of 897, determined by mass analysis.

**[0058]** The compound represented by Formula 2 was dissolved in dichloromethane and analyzed by fluorescent spectroscopy. It emitted red light having a peak wavelength of 617 nm.

**[0059]** A mixed film of the compound represented by Formula 2 and mCP as the host material was formed on a quartz substrate by spin coating, with THF as a solvent used to keep the solid concentration at 1% by mass and exemplary com-

pond concentration at 10% by mass based on mCP. The coating film was measured for contact angle with water, which can be determined by  $\theta/2$  method, tangential or curve-fitting method. It was  $92.1^\circ$ . The films of individual mCP and the compound represented by Formula 2 as the reference samples had the contact angles of respective  $80.6$  and  $96.7^\circ$ . It was considered that the compound represented by Formula 2 was not uniformly dispersed in mCP but distributed more in the surface area because of the angle greatly changing with the mixing ratio.

#### (Synthesis of Compound Represented by Formula 3)

**[0060]** The compound represented by Formula 3 was synthesized by the following procedure.

**[0061]** A 200 mL three-necked flask was charged with 0.959 g of the compound represented by Formula 6, 0.706 g of 1,1,1,2,2,3,3,7,7,8,8,9,9,9-tetradecafluoro-4,6-nonandione, 0.25 g of sodium carbonate and 30 mL of butoxyethanol. The mixture was heated at  $150^\circ\text{C}$ . for 20 hours under reflux in a nitrogen atmosphere, then cooled to room temperature, and treated by evaporation. The resulting solid was dissolved in dichloromethane and filtered. The filtrate was separated and washed with dichloromethane/water. The dichloromethane solution was removed and treated by evaporation. The resulting solid was washed with hexane and treated by alumina column gas chromatography with dichloromethane as the mobile phase to produce the compound represented by Formula 3.

#### <Preparation of Organic Light-Emitting Device>

**[0062]** Example 1 prepared the white-light-emitting device having a structure illustrated in FIG. 2, with the lower electrode of ITO and hole injection layer of PEDOT, formed by spin coating, and hole transport layer of a polymer. The organic light emitting layer was composed of mCP (1,3-bis(carbazol-9-yl)benzene) as the host material, iridium complex (bis(3,5-difluoro-2-(2-pyridyl)phenyl)-(2-carboxypyridyl)iridium(III)) as the blue-light-emitting dopant and the compound represented by Formula 2, prepared above, as the red-light-emitting dopant in a weight ratio of 100/5/1.

**[0063]** The host material, blue-light-emitting dopant and red-light-emitting dopant were dissolved in THF to keep the solid concentration at 1% by mass and red-light-emitting dopant at 0.46% by mol based on the solid component, determined by liquid chromatography. The solution was used to form the organic light-emitting layer by spin coating. Then, the electron transport layer of BA1q and Alq3 was formed by vacuum vapor deposition, and then the upper electrode of LiF/Al laminate was formed, to prepare the target organic light-emitting device.

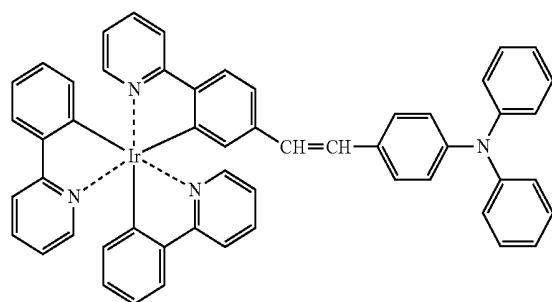
**[0064]** A voltage was applied to the organic light-emitting device thus prepared to confirm that each of the red-light-emitting and blue-light-emitting dopants emitted light, as evidenced by the EL spectral pattern, and that the device emitted white light. The device was also prepared in the same manner except that the red-light-emitting dopant contained no fluoroalkyl group for comparison. The device was confirmed to emit blue light of decreased intensity and red light of increased intensity.

#### Example 2

**[0065]** Example 2 prepared the light-emitting layer in the same manner as in Example 1, except that mCP was used for

the host material, bis(3,5-difluoro-2-(2-pyridyl)phenyl)-(2-carboxypyridyl)iridium (III) was used for the blue-light-emitting dopant, the compound represented by Formula 2 was used for the red-light-emitting dopant, and the compound represented by Formula 5 or Ir(ppy)<sub>3</sub> dissolved in THF was used for the green-light-emitting dopant.

[Formula 5]



(Formula 5)

**[0066]** A voltage was applied to the organic white-light-emitting device with the green-light-emitting dopant of the compound represented by Formula 5 to confirm that each of the red-light-emitting dopant, green-light-emitting and blue-light-emitting dopants emitted light. For the device with the green-light-emitting dopant of Ir(ppy)<sub>3</sub>, the blue-light-emitting and green-light-emitting dopants emitted light of lower intensity than the red-light-emitting dopant.

#### Example 3

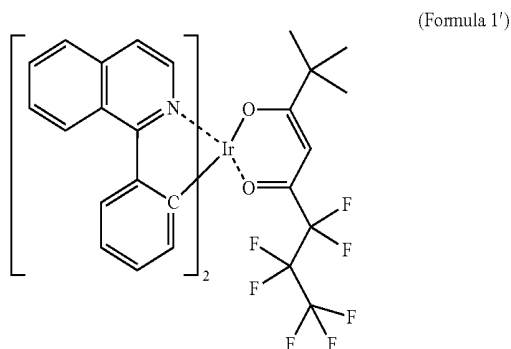
**[0067]** FIG. 3 is a cross-sectional view of the organic white-light-emitting device prepared in Example 3. The device had an upper electrode 212 as the first electrode, lower electrode 211 as the second electrode and organic layer 213. The lower electrode 211 and upper electrode 212 may be used as the respective first and second electrodes. The device illustrated in FIG. 3 comprised a substrate 210 which supported the lower electrode 211, organic layer 213 and upper electrode 212 in this order from the substrate. It was of bottom emission type in which light emitted by a light-emitting layer 203 was taken out from the lower electrode 211 side. The lower electrode 211 was the transparent electrode working as the anode and upper electrode 212 was the repeller working as the cathode. The organic layer 213 was composed of a hole injection layer 210, hole transport layer 202, light-emitting layer 203, electron transport layer 208 and electron injection layer 209. The organic layer 213 may not necessarily have the above structure. It may be of a single-layer structure with the light-emitting layer 203 alone or multi-layer structure having no hole transport layer 202. Moreover, the electron transport layer 208 may be a laminate of the electron transport layer and blocking layer. The organic light-emitting layer illustrated in FIG. 3 makes a light source device, when provided with a driving circuit, case and so on.

**[0068]** The light-emitting layer 203 had a host material, and red-light-emitting dopant 205, green-light-emitting dopant 206 and blue-light-emitting dopant 207. The green-light-emitting dopant 206 may not be necessary so long as the layer 203 emit white light. Each of the red-light-emitting dopant 205 and blue-light-emitting dopant 207 were localized in the

light-emitting layer **203** to form a pseudo laminated structure. First, the light-emitting layer structure is described.

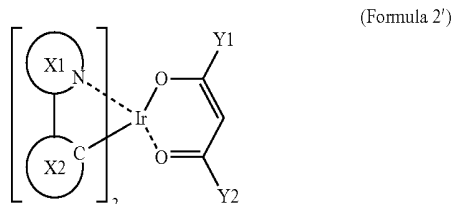
**[0069]** An iridium complex represented by Formula 1' was used for the red-light-emitting dopant.

[Formula 1']



**[0070]** Another useful iridium complex is represented by Formula 2'.

[Formula 2']



**[0071]** In Formula 2', X1 is an N-containing aromatic hetero ring, and X2 is an aromatic hydrocarbon ring or aromatic hetero ring. Examples of the aromatic hetero ring represented by X1 include quinoline, isoquinoline, pyridine, quinoxaline, thiazole, pyrimidine, benzothiazole, oxazole, benzoxazole, indole and isoindole rings. Examples of the aromatic hydrocarbon ring or aromatic hetero ring represented by X2 include benzene, naphthalene, anthracene, thiophene, benzothiophene, furan, benzofuran and fluorene rings. Examples of Y1 and Y2 include fluoroalkyl, perfluoroalkyl, alkyl (of 10 carbon atoms or more), perfluoropolyether and siloxy (Si—O—Si—) groups. The red-light-emitting dopant **205** may contain one or more of these functional groups. The functional group of Y1 or Y2 works to lower surface energy and hence to localize the red-light-emitting dopant in the surface on the upper electrode side in the light-emitting layer.

**[0072]** The functional group may be introduced to the major skeleton directly, as illustrated by Formula 2', or indirectly via an amido or ester bond, to distribute red-light-emitting dopant in the light-emitting layer at graded concentrations.

**[0073]** Other compounds having a similar functional group may be used. These include so-called phosphorescent dopants, e.g., osmium complex, europium complex and platinum complex, and (E)-2-(2-(4-(dimethylamino)styryl)-6-methyl-4H-pyran-4-ylidene)malononitrile (DCM).

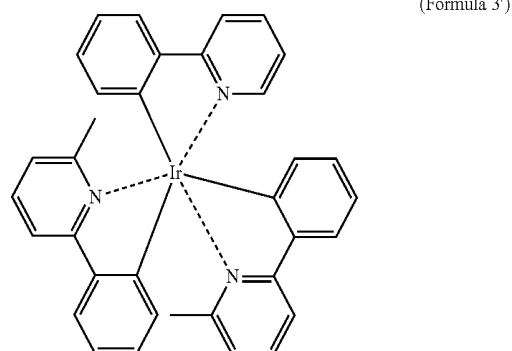
**[0074]** Examples of the material for the host material **204** in the light-emitting layer **203** include mCP (1,3-bis(carbazol-

9-yl)benzene). The other materials include carbazole, fluorene and arylsilane derivatives. The host material **204** preferably has a sufficiently higher excitation energy than the blue-light-emitting dopant, in order to efficiently emit light. Excitation energy is determined by emission spectroscopy.

**[0075]** The host material may be a mixture of a plurality species of host materials. Part of the host material **204** may be substituted with fluoroalkyl, perfluoroalkyl, alkyl (of 10 carbon atoms or more), perfluoropolyether or siloxy (—Si—O—Si—) group. Such a material, when incorporated in the host material **204**, facilitates localization of part of the host material in the light-emitting layer **203** surface, with the result that it is present in the surface together with the red-light-emitting dopant to prevent agglomeration of the dopant and thereby to improve light-emitting efficiency.

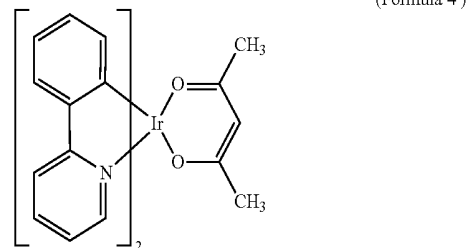
**[0076]** This example used an iridium complex represented by Formula 3' for the green-light-emitting dopant.

[Formula 3']



**[0077]** An iridium complex having 2 species of different ligands, represented by Formula 4' may be used instead of a coumarin compound or the above iridium complex having almost similar ligands.

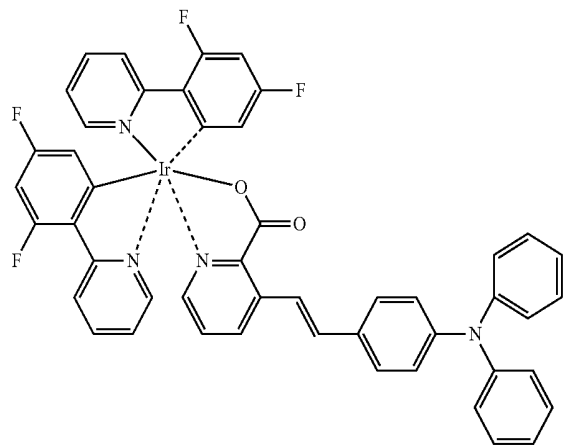
[Formula 4']



**[0078]** The green-light-emitting dopant does not need a special functional group. It is however preferably low in symmetry viewed from improving solubility. It may have a substituent low in compatibility with the underlying layer, such as the hole transport layer, hole injection layer or lower electrode.

**[0079]** This example used an iridium complex represented by Formula 5' having a substituent for the blue-light-emitting dopant for transferring the dopant toward the underlying layer.

[Formula 5']



**[0080]** The functional group varies depending on the underlying layer to which the dopant is transferred during the film-making step. When the underlying layer is the hole transport layer, the group should have a structure similar to the hole transport layer, e.g., arylamino or carbazole group, or hydrazone site. When the underlying layer is of ITO or a metal, examples of the functional group include hydroxyl ( $-\text{OH}$ ), thiol ( $-\text{SH}$ ), carboxyl ( $-\text{COOH}$ ), sulfo ( $-\text{SO}_3\text{H}$ ) or bipyridyl group, or I, Br, Cl, F, SCN, CN,  $\text{NH}_2$  or  $\text{NO}_2$ . The green-light-emitting dopant **207** may contain one or more of these functional groups. Hydroxyl is preferable, when the light-emitting layer is incorporated with an oxide of high specific gravity. A long-chain alkyl group is preferable, when the underlying layer has a long-chain alkyl group. The group may be introduced to the major skeleton directly, as illustrated by Formula 5', or indirectly via an alkyl chain in consideration of the molecular size. A perylene derivative is also a useful material for the blue-light-emitting dopant **207**.

**[0081]** Next, the other components are described. As discussed earlier, the organic layer **213** may not necessarily need the hole injection layer **201**, hole transport layer **202**, electron transport layer **208** or electron injection layer **209**.

**[0082]** This example used poly(3,4-ethylenedioxythiophene) (PEDOT) and polystyrenesulfonate (PSS) for the hole injection layer **201**. Polyaniline-base, polypyrrole-base and triphenylamine-base polymers are also useful. A material incorporated with fine metal particles is also useful. They may be used in combination of low-molecular-weight material. A phthalocyanine-base compound is also applicable.

**[0083]** This example used an arylamine-base polymer for the hole transport layer **202**. Other materials useful for the hole transport layer **202** include, but not limited to, polyfluorene-base, polyarylene-base, polyarylene-base and polycarbazole-base polymers, and starburst-amine-base compound, stilbene derivative, hydrazone derivative and thiophene derivative. They may be used in combination.

**[0084]** The electron transport layer **208** was responsible for donating electrons to the light-emitting layer **203**. This example used bis(2-methyl-8-quinolinolate)-4-(phenylphenolate) aluminium (Balq) and tris(8-quinolinolate) aluminium (Alq3), which formed a laminated structure, for the electron transport layer **208**. This layer may be of a single-layer struc-

ture of Balq, Alq3, oxadiazole derivative, fullerene derivative, quinoline derivative or silole derivative.

**[0085]** The electron injection layer **209** worked to improve efficiency of injection of the electrons from the cathode to the electron transport layer **208**. This example used lithium fluoride for the layer **209**. Other useful materials include, but not limited to, magnesium fluoride, calcium fluoride, strontium fluoride, barium fluoride, magnesium oxide and aluminum oxide. A mixture of electron-transferring material and alkali metal or alkali metal oxide, or mixture of electron-transferring material and electron-donating material may be used. They may be used in combination.

**[0086]** This example used ITO for the lower electrode **211**. The material for the anode as the lower electrode **211** is not limited so long as it is transparent and having a high work function. The examples of the material include an electroconductive oxide, e.g., ITO or IZO, or metal of high work function, e.g., thin Ag. The electrode can be patterned normally on a substrate, e.g., glass, by photolithography.

**[0087]** This example used Al for the upper electrode **212**. The cathode as the upper electrode **212** injected the electrons into the light-emitting layer **203** to reflect light emitted from the light-emitting layer. Examples of the suitable material for the upper electrode **212** specifically include Al, Mg/Ag alloy and Ag.

**[0088]** The coating solution was composed of the host material **204**, red-light-emitting dopant **205**, green-light-emitting dopant **206** and blue-light-emitting dopant **207**, dissolved in an adequate solvent. The coating solution may not necessarily need the green-light-emitting dopant **206**. The solution contained the host material **204**, red-light-emitting dopant **205**, green-light-emitting dopant **206** and blue-light-emitting dopant **207** in a ratio of 100/1/5/1 by mass. In terms of the concentration based on the solid component, the red-light-emitting dopant **205**, green-light-emitting dopant **206** and blue-light-emitting dopant **207** were present at 0.46, 2.9 and 0.5% by mol, respectively. This example used tetrahydrofuran (THF) as the solvent. The solvents useful for the present invention are not limited so long as they can dissolve these components. The examples include aromatic hydrocarbons (e.g., toluene), ethers (e.g., tetrahydrofuran), alcohols, fluorine-base ones. These solvents may be used in combination for adjusting solubility and drying speed of each component. For example, a mixture of solvents of different boiling point may be used, wherein the higher-boiling one is used as a poor solvent with the red-light-emitting dopant **205** to accelerate transfer of the dopant to the film surface. Solubility of the solvent is determined by liquid chromatography.

**[0089]** This example used spin coating for forming the light-emitting layer. The other useful methods include casting, dip coating, spray coating, screen printing and ink-jet printing.

**[0090]** The device structure is described taking a bottom emission type structure as an example. However, the present invention is also applicable to a top emission type structure with the upper electrode working as a transparent electrode so long as the upper and lower electrodes work as the respective cathode and anode.

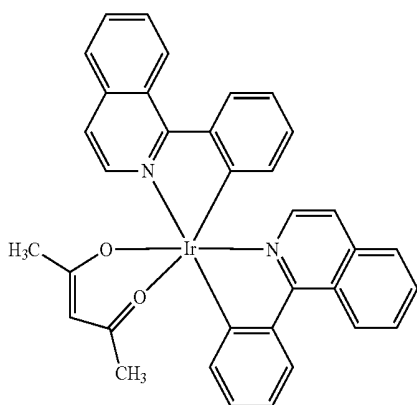
**[0091]** A voltage was applied to the light-emitting device prepared in this example, positive at the lower electrode and negative at the upper electrode, to confirm that the device emitted white light comprising blue, green and red lights. FIG. 4 illustrates the energy diagram of the device.

[0092] The device has the energy diagram illustrated in FIG. 4, when each of the red-light-emitting dopant 205 and blue-light-emitting dopant 207 has spontaneous phase-separation. FIG. 4 shows that the lowest unoccupied molecular orbital (LUMO) energy of the blue-light-emitting dopant 207 is intermediate between those of the light-emitting layer 203 and second electrode 211, and lower than that of the layer adjacent to the light-emitting layer 203. The lowest unoccupied molecular orbital (LUMO) energy is determined by finding the HOMO (highest occupied molecular orbital)-LUMO differential energy from the absorption spectra or directly by inverse photoemission spectroscopy. In this case, the electron is injected from the electron transport layer 208 into the light-emitting layer 203, and trapped by the blue-light-emitting dopant 207. On the other hand, the hole is injected from the hole transport layer 202 into the blue-light-emitting dopant 207, where the electron and hole are recombined with each other to emit light. Part of the hole is transferred toward the green-light-emitting dopant 206 and red-light-emitting dopant 205, where it is recombined with the electron injected from the electron transport layer 208 to emit light. Thus, the device efficiently emits light, because of the presence of energy barrier which blocks flow of the electron between the hole transport layer 202 and blue-light-emitting dopant 207.

#### Comparative Example 1

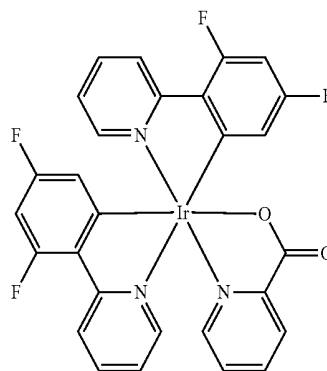
[0093] Comparative Example 1 prepared a light-emitting device in the same manner as in Example 3, except that a compound represented by Formula 6' was used for the red-light-emitting dopant 205 and compound represented by Formula 7' for the blue-light-emitting dopant 207. The device emitted light of high intensity only from the red-light-emitting dopant 205, with the blue-light-emitting dopant 207 and green-light-emitting dopant 206 emitting light of low intensity, conceivably because the green-light-emitting dopant 206 and red-light-emitting dopant 205 were close enough to the blue-light-emitting dopant 207 to cause transfer of energy from the blue-light-emitting dopant 207 and green-light-emitting dopant 206 to the red-light-emitting dopant 205.

[Formula 6']



(Formula 6')

[Formula 7']



(Formula 7')

#### Example 4

[0094] Example 4 prepared a light-emitting device in the same manner as in Example 3, except that the compound represented by Formula 7' was used for the blue-light-emitting dopant 207 for the light-emitting layer and the coating solution contained the host material 204, red-light-emitting dopant 205, green-light-emitting dopant 206 and blue-light-emitting dopant 207 in a ratio of 100/1/0.5/1 by mass. The red-light-emitting dopant 205, green-light-emitting dopant 206 and blue-light-emitting dopant 207 were present at 0.45, 0.28 and 5.5% by mol, respectively. The device emitted white light comprising blue, green and red lights.

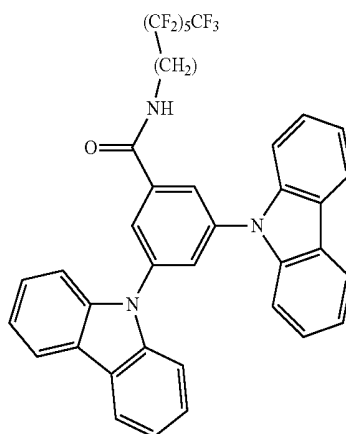
#### Comparative Example 2

[0095] Comparative Example 2 prepared a light-emitting device in the same manner as in Example 4, except that the compound represented by Formula 6' was used for the red-light-emitting dopant 205. The device emitted light of high intensity only from the red-light-emitting dopant 205, with the blue-light-emitting dopant 207 and green-light-emitting dopant 206 emitting light of low intensity.

#### Example 5

[0096] Example 5 prepared a light-emitting device in the same manner as in Example 3, except that a compound represented by Formula 8' was used in addition to mCP for the host material 204 for the light-emitting layer.

[Formula 8']



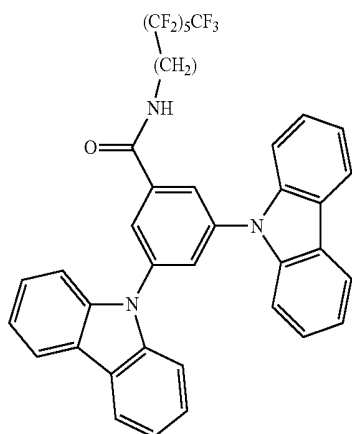
(Formula 8')

[0097] The device emitted light more efficiently than that prepared in Example 3.

#### Example 6

[0098] Example 6 prepared a light-emitting device in the same manner as in Example 4, except that a compound represented by Formula 8' was used in addition to mCP for the host material **204** for the light-emitting layer.

[Formula 8']



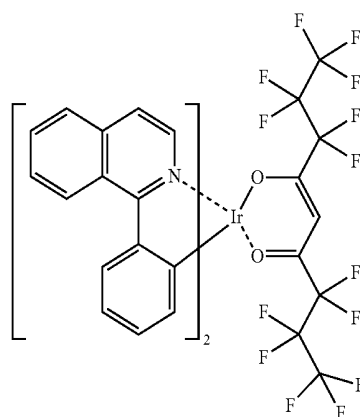
(Formula 8')

[0099] The device emitted light more efficiently than that prepared in Example 4.

#### Example 7

[0100] Example 7 prepared a light-emitting device in the same manner as in Example 3, except that a compound represented by Formula 9' was used for the red-light-emitting dopant **205** for the light-emitting layer. The device emitted white light comprising blue, green and red lights.

[Formula 9']



(Formula 9')

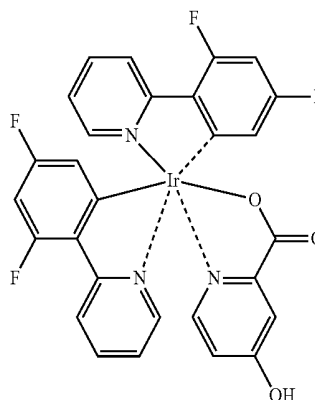
#### Example 8

[0101] Example 8 prepared a light-emitting device in the same manner as in Example 3, except that a compound represented by Formula 10' was used for the blue-light-emitting

dopant **207** for the light-emitting layer, and the light-emitting layer contained fine titania particles having a diameter of about 2 nm.

[Formula 10']

(Formula 10')



[0102] The device emitted white light comprising blue, green and red lights.

[0103] It should be further understood by those skilled in the art that although the foregoing description has been made on embodiments of the invention, the invention is not limited thereto and various changes and modifications may be made without departing from the spirit of the invention and the scope of the appended claims.

#### DESCRIPTION OF REFERENCE NUMERALS

- [0104] **101** Hole injection layer
- [0105] **102** Hole transport layer
- [0106] **103** Light-emitting layer
- [0107] **104** Host material
- [0108] **105** Red-light-emitting dopant
- [0109] **106** Green-light-emitting dopant
- [0110] **107** Blue-light-emitting dopant
- [0111] **108** Electron transport layer
- [0112] **109** Electron injection layer
- [0113] **110** Substrate
- [0114] **111** Lower electrode
- [0115] **112** Upper electrode
- [0116] **113** Organic layer
- [0117] **201** Hole injection layer
- [0118] **202** Hole transport layer
- [0119] **203** Light-emitting layer
- [0120] **204** Host material
- [0121] **205** Red-light-emitting dopant
- [0122] **206** Green-light-emitting dopant
- [0123] **207** Blue-light-emitting dopant
- [0124] **208** Electron transport layer
- [0125] **209** Electron injection layer
- [0126] **210** Substrate
- [0127] **211** Lower electrode
- [0128] **212** Upper electrode

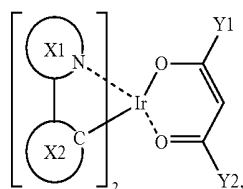
1. An organic light-emitting device comprising:
  - a first electrode;
  - a second electrode; and
  - a light-emitting layer positioned between the first electrode and the second electrode,

wherein the light-emitting layer contains a host material, a red-light-emitting dopant and a blue-light-emitting dopant, the red-light-emitting dopant has a first functional group for transferring the dopant toward the first electrode, and the host material has a higher excitation energy than the blue-light-emitting dopant.

2. The organic light-emitting device according to claim 1, wherein the first functional group is at least one species selected from the group consisting of fluoroalkyl, perfluoroalkyl, alkyl (of 10 carbon atoms or more), perfluoropolyether and siloxy groups.

3. The organic light-emitting device according to claim 1, wherein the red-light-emitting dopant is of the iridium complex represented by Formula 1

[Formula 1]



(Formula 1)

wherein X1 is an N-containing aromatic hetero ring, X2 is an aromatic hydrocarbon ring or aromatic hetero ring, and Y1 and Y2 are each fluoroalkyl, perfluoroalkyl, alkyl, perfluoropolyether or siloxy groups.

4. The organic light-emitting device according to claim 1, wherein the light-emitting layer contains a green-light-emitting dopant which has a second functional group for transferring the dopant to the second electrode.

5. The organic light-emitting device according to claim 4, wherein the second functional group is at least one species selected from the group consisting of hydroxyl (—OH), thiol (—SH), carboxyl (—COOH), sulfo (—SO<sub>3</sub>H), I, Br, Cl, F, SCN, CN, NH<sub>2</sub>, NO<sub>2</sub> and bipyridyl groups.

6. The organic light-emitting device according to claim 4, wherein a hole injection layer is disposed between the second electrode and the light-emitting layer, and the second functional group is at least one species selected from the group consisting of phenylamino, oxazole and carbazole group, and hydrazone site.

7. The organic light-emitting device according to claim 4, wherein the absolute value of the lowest unoccupied molecular orbital energy of the blue-light-emitting dopant is higher than that of the green-light-emitting dopant.

8. The organic light-emitting device according to claim 1, wherein the light-emitting layer is prepared by a coating method.

9. A coating solution used for forming the light-emitting layer for the organic light-emitting device according to claim 1, containing a solvent, host material, red-light-emitting dopant and blue-light-emitting dopant.

10. A coating solution used for forming the light-emitting layer for the organic light-emitting device according to claim 4, containing a solvent, host material, red-light-emitting dopant, blue-light-emitting dopant and green-light-emitting dopant.

11. The coating solution according to claim 9, wherein the solvent contains first and second solvents, the first solvent

boiling at a higher temperature than the second one, and working as a poor solvent with the red-light-emitting dopant.

12. A luminescent material used for forming the light-emitting layer for the organic light-emitting device according to claim 1, containing a host material, red-light-emitting dopant and blue-light-emitting dopant.

13. A luminescent material used for forming the light-emitting layer for the organic light-emitting device according to claim 4, containing a host material, red-light-emitting dopant, blue-light-emitting dopant and green-light-emitting dopant.

14. A light source device using the organic light-emitting device according to claim 1.

15. An organic light-emitting device comprising:

a first electrode;

a second electrode; and

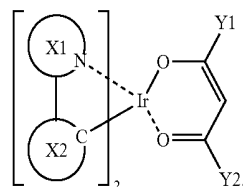
a light-emitting layer positioned between the first electrode and the second electrode,

wherein the light-emitting layer contains a host material, a red-light-emitting dopant and a green-light-emitting dopant, the red-light-emitting dopant is present in the light-emitting layer at graded concentrations, the red-light-emitting dopant has a first substituent to be localized in the vicinity of the first electrode, and the host material has a higher excitation energy than the blue-light-emitting dopant.

16. The organic light-emitting device according to claim 15, wherein the first substituent contains at least one species of functional group selected from the group consisting of fluoroalkyl, perfluoroalkyl, alkyl (of 10 carbon atoms or more), perfluoropolyether and siloxy groups.

17. The organic light-emitting device according to claim 15, wherein the red-light-emitting dopant is of the iridium complex represented by Formula 2'

[Formula 2']



(Formula 2')

wherein X1 is an N-containing aromatic hetero ring, X2 is an aromatic hydrocarbon ring or aromatic hetero ring, and Y1 and Y2 are each fluoroalkyl, perfluoroalkyl, alkyl (of 10 carbon atoms or more), perfluoropolyether or siloxy (Si—O—Si—) group.

18. The organic light-emitting device according to claim 15, wherein the light-emitting layer contains a green-light-emitting dopant which contains a second substituent to be transferred to the second electrode.

19. The organic light-emitting device according to claim 15, wherein the second substituent contains at least one species of functional group selected from the group consisting of arylamino and carbazole groups, and hydrazone site.

20. The organic light-emitting device according to claim 15, wherein a hole transport layer is disposed between the second electrode and light-emitting layer, and the second substituent contains is at least one species of functional group

selected from the group consisting of hydroxyl, thiol, carboxyl, sulfo, I, Br, Cl, F, SCN, CN, NH<sub>2</sub>, NO<sub>2</sub> and bipyridyl groups.

**21.** The organic light-emitting device according to claim **15**, wherein the host material contains the first substituent.

**22.** A coating solution used for forming the light-emitting layer for the organic light-emitting device according to claim **15**, containing a solvent, host material, red-light-emitting dopant and green-light-emitting dopant.

**23.** A coating solution used for forming the light-emitting layer for the organic light-emitting device according to claim **18**, containing a solvent, host material, red-light-emitting dopant, green-light-emitting dopant and blue-light-emitting dopant.

**24.** The organic light-emitting device according to claim **15**, containing fine particles of metal oxide.

**25.** The organic light-emitting device according to claim **18**, wherein the blue-light-emitting dopant has the lowest unoccupied molecular orbital energy intermediate between those of the light-emitting layer and second electrode, and lower than that of the layer adjacent to the light-emitting layer.

**26.** A luminescent material used for forming the light-emitting layer for the organic light-emitting device according to claim **15**, containing a host material, red-light-emitting dopant and green-light-emitting dopant.

**27.** A luminescent material used for forming the light-emitting layer for the organic light-emitting device according

to claim **18**, containing a host material, red-light-emitting dopant, blue-light-emitting dopant and green-light-emitting dopant.

**28.** A method for making an organic light-emitting device comprising a first electrode, a second electrode and a light-emitting layer positioned between the first electrode and the second electrode, the light-emitting layer containing a host material, a red-light-emitting dopant and a blue-light-emitting dopant, the red-light-emitting dopant has a first functional group for transferring the dopant toward the first electrode, and the host material has a higher excitation energy than the blue-light-emitting dopant, the method comprising:

providing the first electrode;

coating a coating solution comprising a solvent, host material, red-light-emitting dopant and blue-light-emitting dopant over the first electrode, and forming the light-emitting layer containing the host material, the a red-light-emitting dopant and the blue-light-emitting dopant over the first electrode from the coating solution; and

providing the second electrode over the light-emitting layer.

**29.** The method according to claim **28**, wherein the coating of the coating solution on the first electrode comprises a coating method selected from the group consisting of spin coating, casting, dip coating, spray coating, screen printing and ink jet printing.

\* \* \* \* \*

专利名称(译)	有机发光材料，使用其的涂层溶液用于有机发光层，使用涂布溶液的有机发光装置和使用有机发光装置的光源装置		
公开(公告)号	<a href="#">US20130048974A1</a>	公开(公告)日	2013-02-28
申请号	US13/659947	申请日	2012-10-25
[标]申请(专利权)人(译)	佐久间孝 荒谷SUKEKAZU SASAKI HIROSHI		
申请(专利权)人(译)	佐久间，广隆 荒谷，SUKEKAZU 佐佐木HIROSHI		
当前申请(专利权)人(译)	佐久间，广隆 荒谷，SUKEKAZU 佐佐木HIROSHI		
[标]发明人	SAKUMA HIROTAKA ARATANI SUKEKAZU SASAKI HIROSHI		
发明人	SAKUMA, HIROTAKA ARATANI, SUKEKAZU SASAKI, HIROSHI		
IPC分类号	C09K11/06 H01L51/56 H01L51/52		
CPC分类号	C09K2211/1029 C09K11/06 C09K2211/1011 H05B33/14 C09K2211/185 Y02B20/181 H01L51/5028 H01L51/5024 H01L51/5036 H01L51/0002 H01L51/56		
优先权	2010009610 2010-01-20 JP 2010009611 2010-01-20 JP		
其他公开文献	US8729536		
外部链接	<a href="#">Espacenet</a> <a href="#">USPTO</a>		

摘要(译)

本发明的目的是提供一种有机发光器件，其能够通过容易地控制掺杂剂浓度来发射白光。有机发光装置具有第一电极（112）和第二电极（111），其间保持发光层（113），其中发光层包含主体材料（104），红光 - 发光掺杂剂（105），绿色发光掺杂剂（106）和蓝色发光掺杂剂（107），该红色发光掺杂剂含有用于将掺杂剂转移到第一电极和绿色的第一官能团 - 包含第二官能团的发光掺杂剂，用于将掺杂剂转移到第二电极。

